

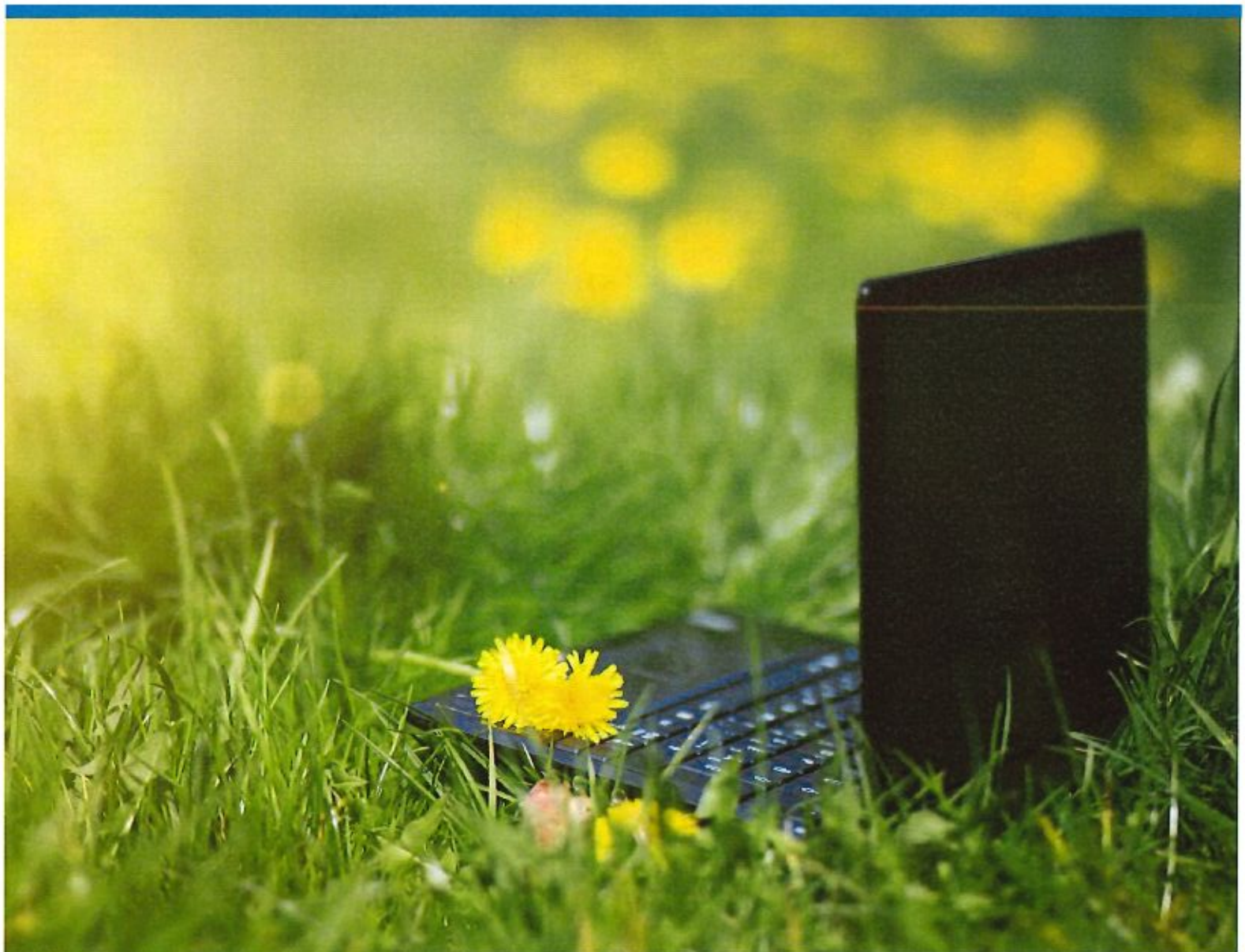


Chancellor's Report

VOLUME 4

ISSUE 17

JULY 2020



SUSLA HONORS 2020 GRADUATES WITH AN UPCOMING VIRTUAL COMMENCEMENT



Dear Graduates of the Class of 2020,

Congratulations on completing your studies at Southern University at Shreveport (SUSLA). Our campus community commends the graduates of the Class of 2020 for surviving and persevering through this global pandemic to finish your final semester at SUSLA. This moment is memorable and should forever be a defining moment for you!

The ongoing coronavirus pandemic forced the cancellation of face-to-face classes and traditional spring commencement ceremonies, not only for SUSLA but at colleges and universities across the nation. During this same time, the recent deaths of George Floyd, Ahmaud Arbery, Breonna Taylor, and countless others who have been targeted because of their skin color have brought hurt, anger, and frustration to many across the country. These recent events have added to the chaos of our current time. However, I know you will continue to persevere to achieve the many dreams you have for your future.

We hope that the experiences of the SUSLA 2020 Graduating Class will inspire many others to face and overcome adversity...For the struggle sharpens us with the skills to accomplish all we can be. So as you move forward in life, remember the words of Francis of Assisi, "Start by doing what's necessary; then do what's possible; and suddenly you are doing the impossible!"

Graduates, their families, and friends are invited to watch SUSLA's Virtual Commencement Ceremony on Saturday, June 27, 2020. The ceremony will be streamed online beginning at 2 p.m. at www.SUSLA.edu and on SUSLA's Facebook and YouTube pages.

Graduates, you have done a fantastic job through the challenges that have occurred this year. Your persistence, determination, and resilience will take you far in your profession and in life.

Success is to be measured not so much by the position that one has reached in life as by the obstacles which he has overcome. -Booker T. Washington

Best Wishes,

Chancellor
Rodney A. Ellis, Ed.D.

MANAGEMENT CONCEPTS GRANT WRITING WORKSHOP



The second session in the Strategic Fundraising series, "ABC'S & 1,2,3's of FUNDRAISING: Strategic System Collaborations to Reach 2020 Goals (#WeAreSouthern), was held remotely on Wednesday, May 06 and Thursday, May 07, 2020.

Management Concepts presented the 16 hour, "Writing Successful Federal Grant Applications" workshop to 22 members of SUSLA's faculty/staff. Representation was well received from various departments (Library, TRiO, Academic Affairs, Student Success, Marketing, Aerospace and more).

The interactive workshop was facilitated by Stephanie Rogers, Chief Advancement Officer and Stephanie Graham, Director of Grants and Sponsored Programs, and led by Management Concepts Instructor, Jerry Betrand.

The workshop provided participants with an introduction to federal grant writing processes. The class focused on the following:

- How to develop a competitive grant application narrative.
- How to compose each element of the grant application narrative clearly and persuasively.
- How to design and submit an effective, reader-friendly final narrative.

Participants were able to work in breakout groups on a variety of projects and gain insight from their colleagues. The goal of this workshop was to make SUSLA a stronger, more competitive grant writing powerhouse.

APPLICATION FEE WAIVED FOR FALL 2020**WAIVED APPLICATION FEES?
YOU HEARD
RIGHT**

SUSLA IS WAIVING APPLICATION FEES FOR
THE FALL APPLICANTS.



Southern University at Shreveport is waiving its application fee, effective immediately, for fall 2020. Eliminating the application fee is part of an initiative to encourage prospective students to explore programs offered at SUSLA and potentially help assist and support those employees who may be or could become displaced workers due to economic challenges with the coronavirus (COVID-19). SUSLA offers a wide variety of certificate, diploma, and associate degree programs in a variety of career fields. Also provided are pre-baccalaureate majors for students interested in saving thousands by completing their first two years at SUSLA and then transferring to a 4-year institution.

Courses will be available on-campus, online or a combination of the two, otherwise known as hybrid for fall 2020. SUSLA has one of the lowest tuition costs for community and technical colleges in the state of Louisiana. Students are encouraged to apply online at [SUSLA.edu](https://www.susla.edu).

For questions about admissions contact the admissions department at admissions@susla.edu or the Welcome Center at (318) 489-0562.

#ComeBeSouthern

MS KICK PROVIDES ECONOMIC STIMULUS & FEEDING DURING COVID-19



The Milam Street Kitchen Incubator and Community Kitchen (MS KICK) executed a "Grab and Go" program to provide hot and healthy meals at its facility for those adversely affected by COVID-19 beginning late May. The program targets the communities of Allendale, Ledbetter Heights, and the West Edge. However, the program offers meals to anyone in need. Approximately 14,445 meals have been served to the community, with almost 150 meals daily. In order to carry out this program, MS KICK solicited tenants who had planned to be a part of the facility but were not able to due to COVID19.

With many of their catering events were canceled due to the pandemic, the initiative allowed MS KICK to contract these caterers allowing them to earn an income. As a result of bringing these various chefs and caterers aboard, they saw first-hand the benefits of using the commercial kitchen and as initially planned signed contracts to become tenants. As of now, we have secured 13 tenants, exceeding tenant contracts and revenue targets. Several tenants now operate successful popup restaurants and catering orders at the facility. MS KICK secured contracts with local businesses and nonprofits that have provided opportunities for the program tenants.

MS KICK partnered with Goodwill Industries and the Providence House, providing their participant's opportunities for employment and work experience as catering assistants. These workforce trainees were giving COVID-19 safety precaution training and earned a certificate from the National Restaurant Association. These individuals put this training to work immediately and assisted in passing out meals, plating meals, and keeping the kitchen sanitized and clean during and after each "Grab & Go" shift.

Grab & Go Program Sponsors: Blue Cross Blue Shield of Louisiana, SUSLA Foundation, Capital One, Beaird Foundation & Healthy Blue

Grab & Go Partners: SUSLA Advancement Office, City of Shreveport Community Development, Housing Authority of Shreveport, MLK Health Center, Volunteers of America, HOPE Connection, Providence House, Goodwill Industries, Food Bank of Louisiana, Shreveport Green & SU Ag Center



When asked about the effectiveness of the "Grab & Go" program, Monique Armand, Culinary Training Director stated, "Grab and Go was a three-fold program, where we were able to provide hot and healthy meals to the community, provide economic opportunities to area caterers who have been out of work due to COVID, and give workforce training and employment to disadvantage people."

The team members involved with this initiative are Monique Armand, MS KICK Culinary Training Director, Tuareza Hose, MS KICK Executive Director, Darrin Dixon, SUSLA Director of Small Business Development, Janice Sneed, Associate Vice Chancellor for Academic Affairs and Workforce Development and Metro Campus Administrator at Southern University at Shreveport (SUSLA). For more information, visit our website at mskick.org, contact MS KICK at mskick@susla.edu or call 318-670-9781.



Top right: Darrin Dixon, Director of Small Business Development, is pictured preparing meals for the community.

Top left: Pictured at the event are Monique Armand, MSKICK Culinary Training Business Development Director, Reata Williams, Upward Bound-Desoto, & George Cox of Sho'Nuff Soulfood and Catering.

MS KICK COMMUNITY GARDEN BREAKS GROUND



MS KICK, in partnership with Shreveport Green, broke ground on the new Community Garden located adjacent to the MS KICK facility at 1210 Milam Street on Saturday, June 20th. It was a much-anticipated event as the opening has been delayed for two months with the onset of the Coronavirus. The Garden consists of 4 raised beds that took in approximately 16 bags of fertilizer to fill each one. Lauren Jones, Naomi's Urban Farm Director, spearheaded the groundbreaking and building of the raised garden beds. "Growing food is a constant reminder that we are all connected. Planting with biodiversity in mind helps create a balance in our ecosystem. We can take that same ideology and apply it to the community. It takes all kinds of people growing together to create the symbiotic relationships we need to thrive as a society", Jones stated in regards to the partnership with Shreveport Green and MS KICK building the new Community Garden.

The plants that were gardened at the groundbreaking were okra, cucumbers, tomatoes, eggplant, bell peppers, basil, and various hot peppers. The Garden will vary from season to season as to what will be planted. It will be maintained by Shreveport Green and harvested with the community. Going forward, once restrictions are lifted, the MS KICK team will have programming to coincide with the gardening days at the facility. Some of the programming will include cooking with the harvested vegetables, providing the history on how some vegetables came to Louisiana, for example, through the slave trade, and planting gardens in personal containers for participants to take home. In the Fall, trees will be planted once the soil is tested and also with the help of Commissioner John Paul Young, there will be a hydroponics system in place as well.

The team members involved with this initiative was Monique Armand, Culinary Training Director, Turaeza Hose, Executive Director, and Darrin Dixon, Director of Small Business Development and Entrepreneurship. Members of the Shreveport Green involved were Lauren Jones, Naomi's Urban Farm Director and Lamond Wheatley, Naomi's Urban Farm Assistant Director. Other volunteers included Diane Libro & Family, ShreveCorps members Caleb Greer, LaTasha Bolden, and Madison Whitten. For more information, visit our website at mskick.org, contact MS KICK at mskick@susla.edu or call 318-670-9781.



SUSLA'S COMMUNITY WORKFORCE DEVELOPMENT APPROVED AS AN ACCREDITED TRAINING SPONSOR (ATS)



Southern University at Shreveport's (SUSLA) Community & Workforce Development (CWD) has been approved as an Accredited Training Sponsor (ATS) by the National Center for Construction & Education Research (NCCER). NCCER is leading the industry in construction training, education, workforce development and innovation. This accreditation enables CWD to begin the process of offering courses geared around construction to the general public. These efforts are in direct response to the Department of Labor's push for apprenticeships as a pathway to employment. For more information, contact Shanace Robinson, Director of Community Engagement & Initiatives at srobinson@susla.edu.

TRiO UPWARD BOUND NORTH SUCCESS STORY



Congratulations to Upward Bound North's twin sisters Alexis, and Portia Harris. They have accomplished several goals academically and athletically throughout their high school careers. Upward Bound North (UBN) is a federally funded program funded to serving fifty-seven low-income/first-generation students to encourage them to complete secondary education and enroll in and graduate from a post-secondary institution. Target high schools are: Booker T. Washington, Green Oaks, and Northwood high schools.

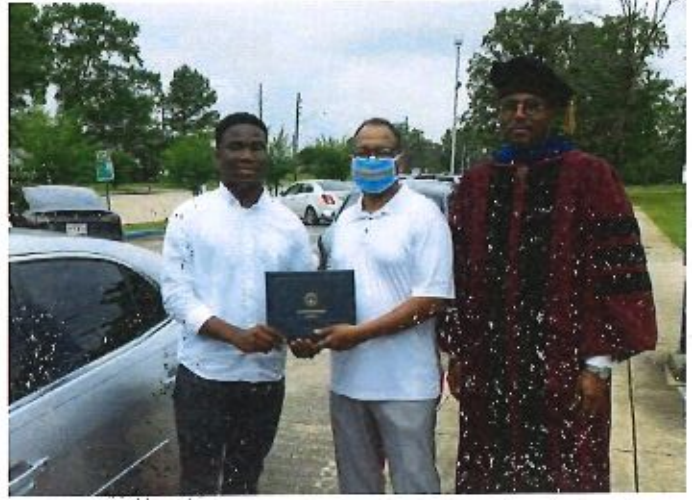
While attending Upward Bound North, the twins will receive their high school diplomas as Valedictorian (Portia) and Salutatorian (Alexis), both with 4.3 GPA's. They will also receive their Associate Degrees from Southern University at Shreveport (SUSLA) this summer through dual enrollment. They are a part of the 2020 senior class at Booker T. Washington High School (BTW) and their accomplishments include:

- National Honor Society (Alexis President, Vice President/Portia, President and Secretary)
- The Principal's List
- SGA officers
- 4-H Club
- Scholars Club
- Girls' Club
- Basketball, Volleyball and Track teams (of which they are the captains of each)
- State runners up for 2018-2019 state track meet
- Alexis received All-American 400-meter dash placing 5th in the nation with Red River City Track Club
- TRiO Upward Bound North Alumnae
- KSLA News 12/Landers Dodge Athlete of the Week

Alexis and Portia Harris committed to a full academic/athletic track and field scholarship to Northwestern State University. They both plan to major in Biology to become pediatricians with their own pediatric clinics together. We at Upward Bound North are very proud of Alexis and Portia's accomplishments and achievements and wish them continued success in the future!

**ARE YOU READY FOR A BRIGHTER FUTURE?
COME BE A PART OF SOUTHERN UNIVERSITY AT SHREVEPORT.**

SUSLA HOSTS DRIVE-THRU DIPLOMA DISTRIBUTION EVENT FOR 2020 GRADUATES



SUSLA STUDENT SUCCESS STORY

Instead of watching life unfold day by day, Robeneyce Green decided to have a life plan after graduating from high school in 2008. She joined the United States Army, then graduated from college in 2012 with a BA in Criminal Justice. Everything was going in the right direction until she was unable to find employment in her career field. It was time to re-write the plan and consider a profession that allowed her to give back and show selfless service.

Robeneyce eventually decided to pursue a career in nursing. After completing an LPN program in 2015, she decided to apply for nursing school at Southern University at Shreveport (SUSLA). "I decided to attend SUSLA because I heard that Southern had instructors challenging their students to learn how to nurse and think critically. Since I liked challenges, I had to attend," said Robeneyce.

In December 2017, Robeneyce graduated from SUSLA, and she received her nursing license the following month. She went on to work at Louisiana State University Medical Center (LSU) in the emergency department, and completed three travel nursing assignments in California, and one in New York during a nationwide pandemic. Ms. Green worked at Mount Sinai in Brooklyn, New York, during the COVID-19 global outbreak for five weeks. It was at this time that she realized she was in the right profession.

Patients were incredibly sick, everyone was on ventilators, and the nurses were overworked. Robeneyce stated, "To look on Facebook and see nurses crying, saying they need help, and that the nurse-patient ratio was out of hand, I felt like I needed to be there. I joined the nursing field to help out across the nation". Robeneyce recalls a situation where a 79-year-old lady was dying. The visitation policy was rigorous; no family could come into the hospital due to the increase in COVID-19 patients. "I remember being in the ER, and the lady knew she was about to die." She held my hand and said, "I thank you for everything that you're doing. I know I'm about to die. I've lived a good life, and it's ok. I want you to hold my hand because you will be an extension of my family. I know they cannot be here."

Thousands of health care workers from across the country risked their lives to travel to hard-hit New York City, where many have died from coronavirus. Even though the daily death toll has fallen in recent weeks, COVID-19 is still spreading. Robeneyce Green has made it home safely and completed a 14-day quarantine. "The experience hasn't changed me; it just confirmed that I'm in the profession that I need to be in. I'm in a job where my hands can heal another; if not heal another, they can give a person empathy or a little sense of hope".



Photos of SUSLA Alumni, Robeneyce Green, LPN.

#ComeBeSouthern



The Chancellor's Report is a monthly publication from the
Office of the Chancellor
Rodney A. Ellis, Ed.D., Chancellor

Contributing Editors

Leslie R. McClellon, Chief of Staff & Special Assistant for Strategic Initiatives
Linzola Winzer, Executive Assistant to the Chancellor
OFFICE OF THE CHANCELLOR

Angelique Feaster-Evans, SUMAS Coordinator
Yvette Allen, Advancement Assistant & Alumni Ambassador

Articles provided through various campus units and
the Office of Marketing & University Relations
Rasheeda Simmons, Director of Marketing

Design & layout provided through the
Office of Graphic Services & Document Management Center
Dellanee Wade, Graphic Services & Multimedia Coordinator

Units of the Division of Institutional Advancement/University Relations
Stephanie K. Rogers, Chief Advancement Officer

SOUTHERN UNIVERSITY SYSTEM BOARD MEMBERS

Atty. Domione D. Rutledge, Chairman
Rev. Samuel C. Tolbert, Jr., Vice Chairman
Mr. John L. Barthelemy
Ms. Arlanda Williams
Rev. Donald R. Henry
Dr. Leroy Davis
Mr. Raymond M. Fondell
Atty. Patrick D. Magee
Mr. Richard T. Hilliard
Mr. Sam Albert Gilliam
Mrs. Ann Smith
Dr. Curman L. Gaines
Rani G. Whitfield, M.D.
Atty. Edwin Shorty
Dr. Leon R. Tarver, II, At-Large
Donald Dunbar, Student Representative
Dr. Ray L. Belton, President & Secretary to the Board of Supervisors

ARE YOU FOLLOWING US ON SOCIAL MEDIA?



Southern University at Shreveport does not discriminate on the basis of race, color, national origin, gender, age, disability, or any other protected class.

Title IX Coordinator: Dr. Tuesday W. Mahoney, Johnny L. Vance, Jr. Student Activity Center, Room 208
318.670.9201. Section 504 Coordinator:

Jerushka Ellis, Health & Physical Education Complex, Room 314, 318.670.9367.



Rodney A. Ellis, Ed. D.
CHANCELLOR

EXECUTIVE TEAM MEMBERS

Leslie R. McClellon
Wayne H. Bryant
Dr. Terrance Kidd
Dr. Antonius Pegues
Stephanie K. Rogers
Dr. Regina Robinson
Frank Williams, Jr.
Dr. Melva Williams

CHANCELLOR'S CABINET MEMBERS

Sandra Bigham
Major Brock
Devonye Brown
JoAnn Warren-Brown
Darrin Dixon
Detrius Adams (SGA)
Angelique Feaster-Evans
Brandy Jacobsen
Stephanie Graham
Dr. Barry Hester
Sonya Hester
Sophia Lee
Janice Sneed
Vanessa Leggett
Dr. Tuesday Mahoney
Dr. Lonnie McCray
Dr. Veronica McEachin
Carolyn Miller
Chief E. Page Reynold
Dr. Lalita Rogers
Jorge Sousa
Katraya Williams
Regina Winn
Sheila Swift
Tiffany Varner
Rasheeda Simmons
Linzola Winzer, Recording Secretary

Chancellor's Report



VOLUME 4

ISSUE 18

AUGUST 2020

SUSLA OFFERS FREE TUITION & LAPTOPS TO STUDENTS FOR FALL 2020



Southern University at Shreveport (SUSLA) is making college more accessible by offering free tuition and laptops to students this Fall. The upcoming semester will look and feel different from the past. Students will engage in a blended learning process. Coursework will be performed on campus and online. This initiative is made possible because of the University's effort to leverage public/private partnerships such as that with organizations including: Capital One, AT&T, JPMorgan Chase and others.

"The challenges brought about by COVID-19 have disrupted the lives of nearly everyone in our campus community. We recognize that some students have faced unprecedented hardships. Showing students that we are committed to supporting them at all levels is why we are offering free tuition and laptops to students who qualify", said Chancellor Rodney Ellis.

SUSLA leaders have developed plans for the academic calendar, changes to first-year students' experience, and living and staying well during the COVID-19 pandemic. Staff campus-wide have reconfigured spaces, processes, and practices to safeguard everyone's health at the institution.

"The Coronavirus Pandemic has disrupted the traditional models of delivering education and created economic hardships. Chase is honored to partner with Southern University to address these impacts by supporting this program to address the urgent need of providing virtual classroom technology to ensure many of those most impacted by this crisis can continue with their education and be able to fully participate in our economy." -- Steve Roop, North Louisiana Market Executive Classes start Wednesday, August 12. For details and eligibility requirements, go to www.susla.edu.

SUSLA & APPLE BRING CODING TO NORTHWEST LOUISIANA



Southern University at Shreveport (SUSLA) announced it is becoming a regional hub for Coding and Creativity as part of Apple's Community Education Initiative and Tennessee State University's HBCU C2 Initiative. It is designed to bring coding and creativity experiences to Historically Black Colleges and Universities (HBCUs) and their communities. Northwest Louisiana is designated as the technology corridor for the state and SUSLA is proud to be a technological innovator in the region.

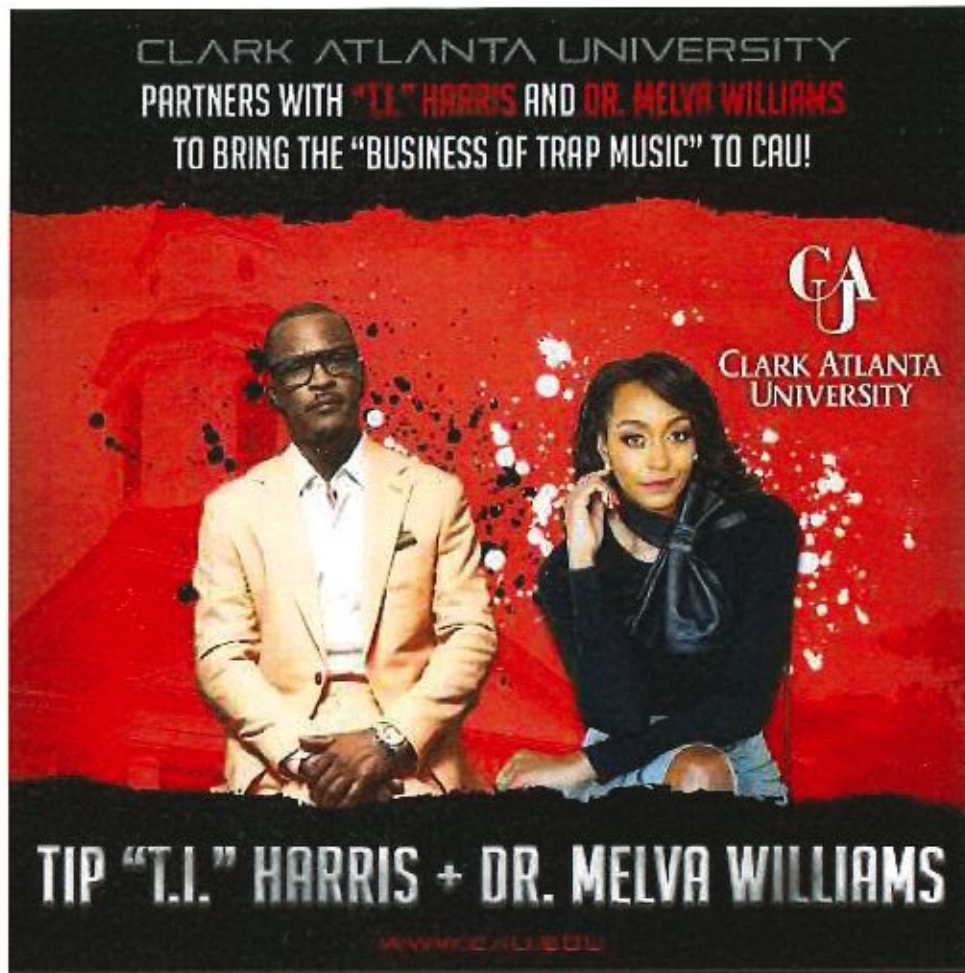
"Technology dominates many different industries right now. Learning to code can lead to many job opportunities. Whether you decide to do freelance, travel while working or work for a company, coding gives you a desirable skill in a competitive job market." — *Chancellor Rodney A. Ellis*

Later this month, faculty leaders from SUSLA will participate in Apple's virtual Teacher Coding Academy to learn about coding and app development using Apple's comprehensive curriculum, which utilizes its easy-to-learn Swift programming language.

As part of its Community Education Initiative, Apple is supporting SUSLA with equipment and professional development to help the university become the pre-eminent regional HBCU C2 hub to bring coding and creativity to Louisiana and East Texas. For more information, please contact: Dr. Sharron Herron-Williams, shwilliams@susla.edu.

#ComeBeSouthern

SUSLA VICE CHANCELLOR TO TEACH A CLASS AT CLARK ATLANTA UNIVERSITY ON THE UNDERSTANDING, ORIGIN, CULTURE AND BUSINESS OF TRAP MUSIC



Award-winning recording artist, actor, producer, songwriter and entrepreneur Tip "T.I." Harris. The duo will step outside of the traditional textbooks and teach an undergraduate class on the understanding, origin, culture and business of Trap music. The ingenious undergraduate course will blend the history of trap music with the economics behind its meteoric rise to becoming a staple in 21st-century hip-hop.

Speaking about the academic opportunity, Dr. Melva Williams had this to say, "I am excited to have my idea come to fruition at an HBCU. More importantly, I am excited to be partnering with Tip. He is the one of the founders of Trap music and has taken the art form to international recognition. The goal is to bring the academic curriculum at our HBCUs to life. Utilizing trap music as a foundation, will bring a sense of relevancy to the current curriculum."

Dr. Williams introduced the concept to the H.B.C.U. community to unmask trap music. Trap music is a subgenre of hip-hop that originated in the south in the early 1990s. Williams is an H.B.C.U. Advocate, prominent figure in higher education, Presidential Leadership Scholar and self-proclaimed trap music aficionado. She will bring immeasurable information to the class. She is also the co-founder of the Higher Education Leadership Foundation (H.E.L.F.) and serves as Vice-Chancellor of Southern University at Shreveport and New Orleans.

As a pioneer of trap music, T.I will offer personal experiences and real-world information and experiences that will benefit the students.

SUSLA OFFERS ASSISTANCE TO STUDENTS THROUGH EMERGENCY GRANT FUND

SUSLA CARES

Excellence • Integrity • Accountability • Service • Diversity

FALL APPLICATION

APPLICATION DEADLINE ENDS MONDAY, SEPTEMBER 7TH

Southern University at Shreveport (SUSLA) has announced the availability of a Student Emergency Relief Fund to address students' emergency needs resulting from the disruption of campus operations due to the Coronavirus (COVID-19). This fund is supported by the Federal CARES Act which provides emergency funds to students for temporary hardship expenses related to the Coronavirus (COVID-19) global pandemic. The COVID-19 funds are limited and not intended to provide ongoing relief. The funds may be awarded to students experiencing unforeseen expenses that, if not resolved quickly, could lead to their departure from SUSLA and/or loss of momentum toward completion of their degrees.

HERE IS A BRIEF OVERVIEW FOR THE CORRESPONDANCE:

- Students must be currently enrolled at SUSLA during the 2020 calendar year
- Additional funds are available for students enrolled during the summer 2020 term(s)
- Students are encouraged to complete the 2020-2021 FAFSA
- This is not a financial aid award, so students are asked to complete the form and allow up to or before September 30th by 5:00 PM for processing.
- SUSLA is partnering with BankMobile to deliver funds to students
- Relief amounts may vary

APPLICATION FOR EMERGENCY FUNDS:

www.susla.edu

Student, emergency relief funds, are now available for SUSLA students. The Cares Act Emergency Relief fund/Student Aid provides emergency financial aid grants to students who have experienced temporary financial hardships due to the Coronavirus (COVID-19) global pandemic. Students may use these funds for the disruption of campus operations such as food, housing, course materials, technology, health care, and childcare.

Dr. Katraya Williams, Director of Financial Aid, stated, "I would like to encourage all students to enroll for the Fall 2020 semester at SUSLA and complete the Fall SUSLA CARES Act application. Students experiencing unexpected expenses and unmet financial need as a result of the COVID-19 pandemic may be eligible to receive these funds. Our goal is to remove financial barriers through graduation. The SUSLA CARES Act can assist our students with achieving their educational goals."

In March, Congress passed The Coronavirus Aid, Relief, and Economic Security Act (Cares Act). It allows higher education institutions to use the Department of Education's specified funds to support students and higher education institutions with expenses and financial needs related to the COVID-19 pandemic.

For additional information and how students should apply, visit www.susla.edu.

OPPORTUNITY STARTS HERE.

THE RISING DEMAND FOR ALLIED HEALTH & NURSING PROFESSIONALS



While job losses are mounting nationwide as businesses shutter, healthcare workers are needed more than ever to deal with the influx of patients due to COVID-19. As per a recent report by CNN, the United States will need to hire 2.3 million new healthcare workers by 2025 to be able to take care of the aging population qualitatively. The need for trained professionals like registered nurses, nursing assistants, radiologic technologists, and more are in high demand.

If you are considering becoming an allied health worker, you have many options at Southern University at Shreveport. Allied health professionals work in various settings, including healthcare facilities, private medical practices, rehabilitation centers, and government agencies.

"Students who choose this career path play an essential role when it comes to delivering health care and related services. At SUSLA, we allow students to earn a college degree, enhance their skills to advance into healthcare-related fields. We also help develop a productive workforce that is ready to meet the demands of Louisiana's job market," stated Dr. Ellis.

Online and evening classes are available for specific programs. For more information in the Nursing Assistant Program, please contact Melanie Scott, BSN, RN, at mscott@susla.edu.

WELCOME OUR JULY 2020 NEW HIRES AT
SOUTHERN UNIVERSITY AT SHREVEPORT



Wilford Claville, III
Laboratory Instructor
BSTEM

Jame'l R. Hodges
Executive Director of Upward Bound & Talent Search
STUDENT AFFAIRS & ENROLLMENT MANAGEMENT

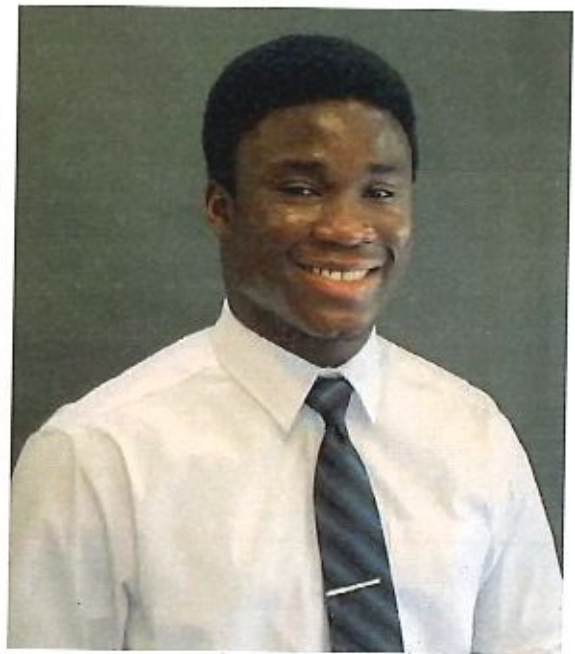
Danny Palmer
Coordinator of Residential Life & Judicial Affairs
STUDENT AFFAIRS & ENROLLMENT MANAGEMENT

SUSLA STUDENT SUCCESS STORY

Emmanuel C. Akintade did not approach the podium to deliver farewell remarks to the graduating class of Spring 2020. Instead, as one of the SUSLA Spring 2020 valedictorians, he offered words of encouragement to his classmates through the virtual graduation ceremony. Akintade's powerful message was, "Stay on your own path and follow your passion."

Akintade, who was an international student from Logos Nigeria, traveled over 6000 miles to become a Southern University at Shreveport (SUSLA) Jaguar in Fall 2018. He graduated from high school at the age of 16 and knew he would continue his education by attending college. At the age of 17, he started his quest in the United States to further his education.

The journey to college was not easy. Emmanuel Akintade's mother used nearly all her savings to send him to the United States. "My mother always encouraged me. She told me education can take you anywhere, keep reading, and studying. You have to be successful; that's the only weapon you can use against anyone that tries to come against you", said Emmanuel.



Photos of SUSLA Alumni, Emmanuel C. Akintade

"During my first semester at SUSLA, I kept asking myself, why am I here? I realized that God does not place you where you don't want to be; God places you somewhere because he's preparing you for where you are going to be," stated Akintade. After realizing his purpose, Akintade started to zone in on his studies. Professors noticed him and his work.

"I first met Professor Sonja Hester. She was one of the first people who saw something in me. She encouraged me! I then met my Professor Hollis, my Biology instructor, who also encouraged me. I was not too fond of Biology, but she pushed me. I met Professor George Lewis in my accounting department. If you are an accounting major and meet Mr. Lewis, your life will never remain the same. The department groomed me in a way I never experienced before; they always looked out for me," stated Akintade.

Dr. Katraya Williams, a staff member, is an excellent woman. She encouraged me to apply for an academic scholarship about three days before the closing date, and I got it! Dr. Regina Webb is also another amazing woman who encouraged me. Akintade has countless other professors and campus-wide staff that helped him during his time at SUSLA. He said, "I'm grateful for my experience at Southern University at Shreveport. They have prepared me for the next phase in my life, I have what I need to move forward."

Emmanuel Akintade graduated from SUSLA with a 4.0 GPA. He received an Associate of Arts Degree in Accounting. He will be continuing his higher education journey at the University of Arkansas in the Fall.

#ComeBeSouthern



The Chancellor's Report is a monthly publication from the
Office of the Chancellor
Rodney A. Ellis, Ed.D., Chancellor

Contributing Editors

Leslie R. McClellon, Chief of Staff & Special Assistant for Strategic Initiatives
Linzola Winzer, Executive Assistant to the Chancellor
OFFICE OF THE CHANCELLOR

Angelique Feaster-Evans, SUMAS Coordinator
Yvette Allen, Advancement Assistant & Alumni Ambassador

Articles provided through various campus units and
the Office of Marketing & University Relations
Rasheeda Simmons, Director of Marketing

Design & layout provided through the
Office of Graphic Services & Document Management Center
Dellanee Wade, Graphic Services & Multimedia Coordinator

Units of the Division of Institutional Advancement/University Relations
Stephanie K. Rogers, Chief Advancement Officer

SOUTHERN UNIVERSITY SYSTEM BOARD MEMBERS

Atty. Domione D. Rutledge, Chairman
Rev. Samuel C. Tolbert, Jr., Vice Chairman
Mr. John L. Barthelemy
Ms. Arlanda Williams
Rev. Donald R. Henry
Dr. Leroy Davis
Mr. Raymond M. Fondell
Atty. Patrick D. Magee
Mr. Richard T. Hilliard
Mr. Sam Albert Gilliam
Mrs. Ann Smith
Dr. Curman L. Gaines
Rani G. Whitfield, M.D.
Atty. Edwin Shorty
Dr. Leon R. Tarver, II, At-Large
Donald Dunbar, Student Representative
Dr. Ray L. Belton, President & Secretary to the Board of Supervisors

ARE YOU FOLLOWING US ON SOCIAL MEDIA?



Southern University at Shreveport does not discriminate on the basis of race, color, national origin, gender, age, disability, or any other protected class.

Title IX Coordinator: Dr. Tuesday W. Mahoney, Johnny L. Vance, Jr. Student Activity Center, Room 208
318.670.9201. Section 504 Coordinator:

Jerushka Ellis, Health & Physical Education Complex, Room 314, 318.670.9367.



Rodney A. Ellis, Ed. D.
CHANCELLOR

EXECUTIVE TEAM MEMBERS

Leslie R. McClellon
Wayne H. Bryant
Dr. Terrance Kidd
Dr. Antonius Pegues
Stephanie K. Rogers
Dr. Regina Robinson
Frank Williams, Jr.
Dr. Melva Williams

CHANCELLOR'S CABINET MEMBERS

Sandra Bigham
Major Brock
Devonye Brown
JoAnn Warren-Brown
Darrin Dixon
Detrius Adams (SGA)
Angelique Feaster-Evans
Brandy Jacobsen
Stephanie Graham
Dr. Barry Hester
Sonya Hester
Sophia Lee
Janice Sneed
Vanessa Leggett
Dr. Tuesday Mahoney
Dr. Lonnie McCray
Dr. Veronica McEachin
Carolyn Miller
Chief E. Page Reynold
Dr. Lalita Rogers
Jorge Sousa
Katranya Williams
Regina Winn
Sheila Swift
Tiffany Varner
Rasheeda Simmons
Linzola Winzer, Recording Secretary